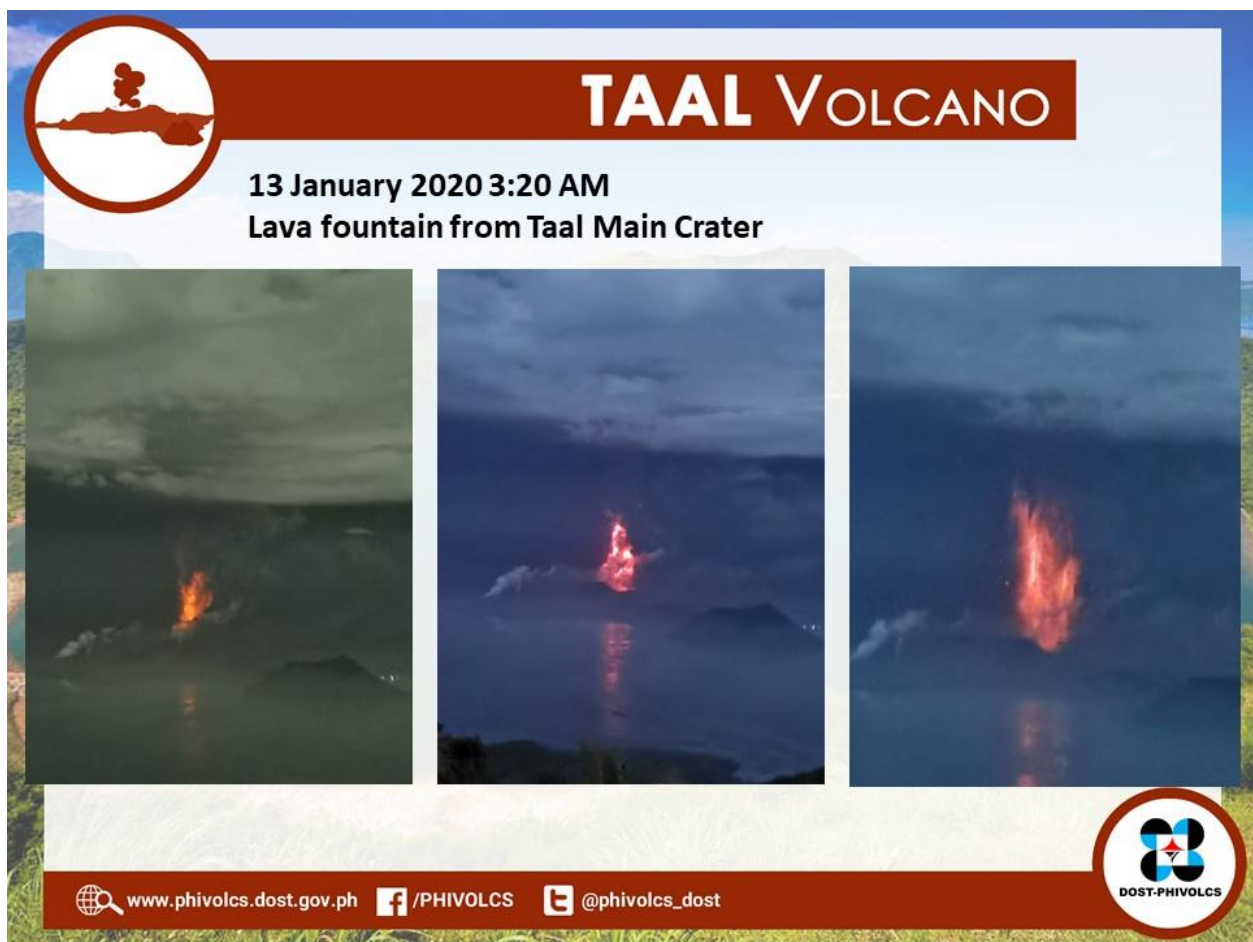


Taal volcano

NDPTC Volcanic Crises Awareness course, AWR-233, develops and enhances the ability of participants to support their organizations' preparedness, response efforts and recovery for future volcanic crises.

Taal is perhaps SE Asia's most dangerous and unpredictable volcano. This is a combination of its setting (the last major eruption built a small island in a small lake on an island in a big lake on the island of Luzon) and its proximity to the Manila megacity (50 km distant). The abundance of water on and around the volcano leads to violent interaction of surface water with the volcano and production of destructive ground-hugging blasts of ash, volcanic rock and steam. Some 6000 people have been killed by eruptions from Taal.



Philippine Institute of Volcanology and Seismology, 2020.

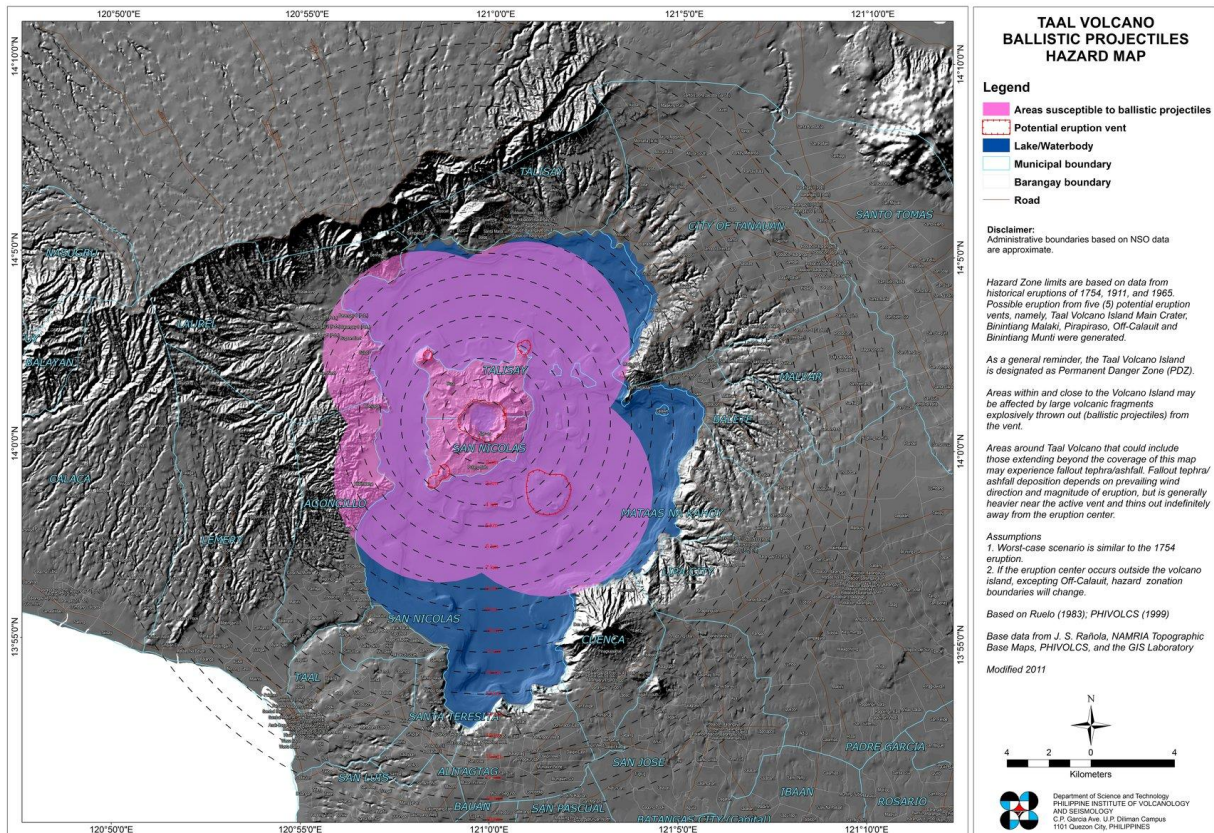
The current eruption involves magma fountaining from numerous vents in, and near, from Taal's main crater which are occasionally interacting with surface water. Heavy local ash fall and closure of airspace and Manila International Airport are immediate problems.

The Philippine Seismic Network has recorded a total of one hundred forty-four (144) volcanic earthquakes in the Taal region since 1:00 PM, January 12, 2020. Forty-four (44) of these earthquakes were felt with intensities ranging from Intensity I – V.

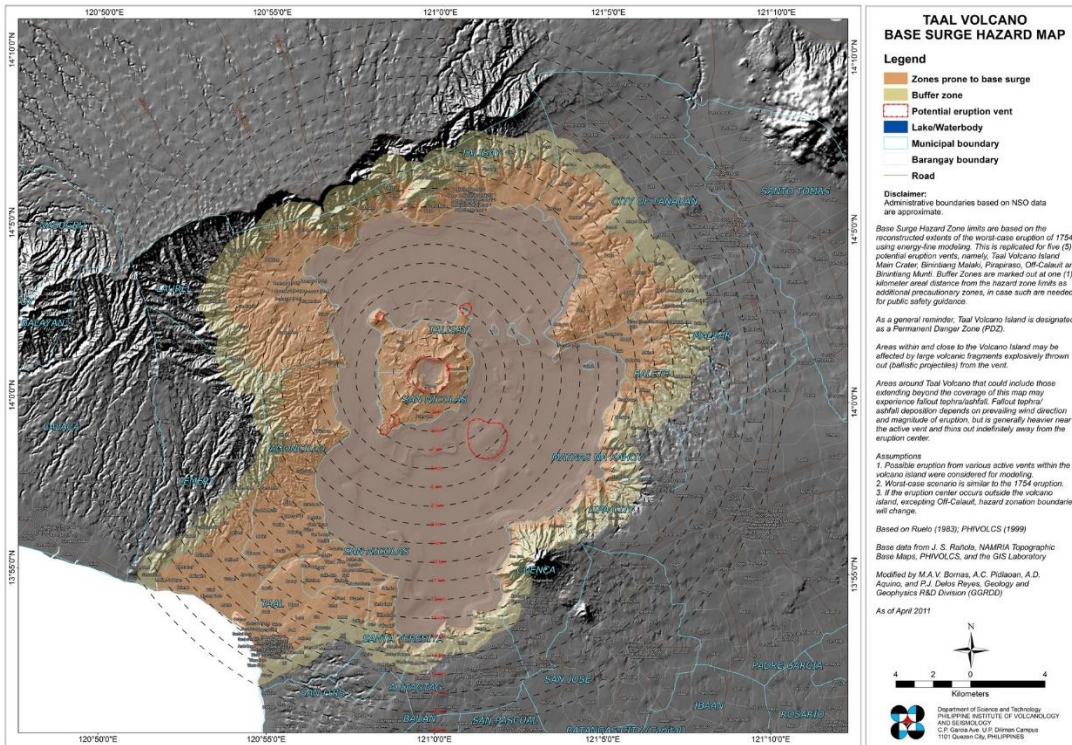
The monitoring agency, DOST-PHIVOLCS, is strongly reiterating that total evacuation of the island and high-risk areas within a 14-kilometer radius must be enforced.

Hazard Maps for Taal volcano from Philippine Institute of Volcanology and Seismology, 2020

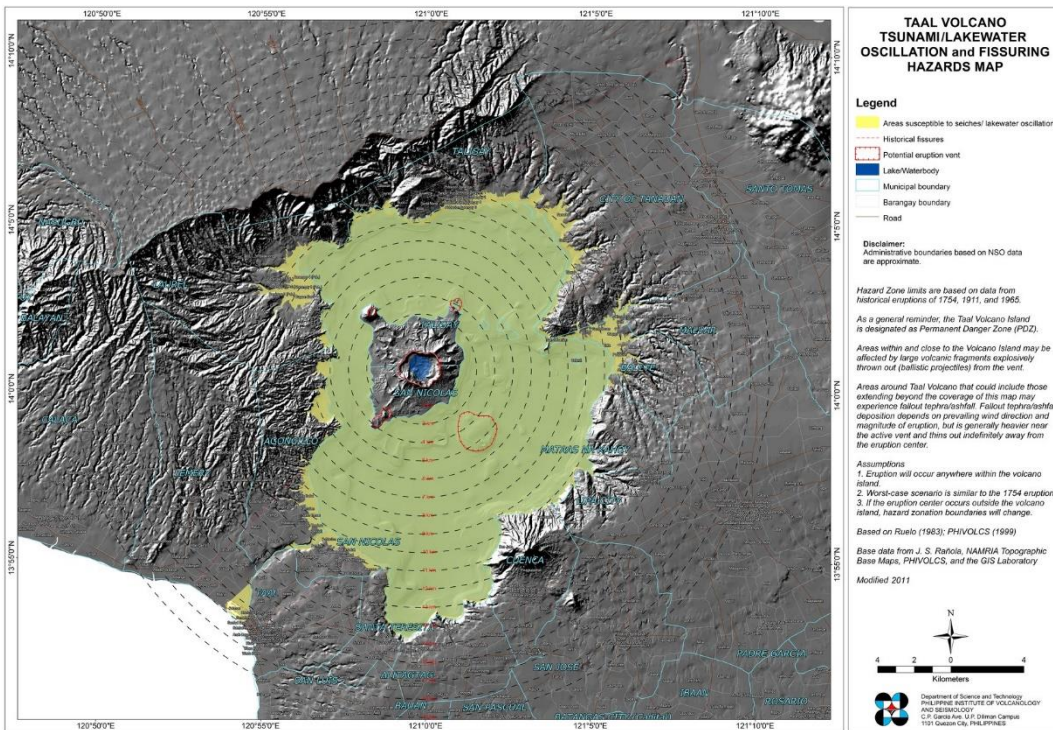
Ballistic Projectiles Hazard map:



Base Surge Hazard Map:



Tsunami/Lake Water Oscillation and Fissuring Hazards Map:



The National Disaster Preparedness Training Center (NDPTC) mission is as follows:

Uniquely positioned geographically and culturally in Hawaii, the NDPTC works collaboratively to develop and deliver training and education in the areas of disaster preparedness, response, and recovery to governmental, private, tribal, and non-profit entities, and under-represented/under-served communities in the US. It incorporates urban planning and environmental management, emphasizing community preparedness and addressing the needs of vulnerable at-risk populations.

NDPTC Volcanic Crises Awareness Course, AWR-233, is particularly relevant to our communities in the US to prepare ourselves for future volcanic eruptions.